

Queensland Parks and Wildlife Service

PEST MANAGEMENT PLAN

2010 - 2015

A plan to meet obligations under the *Land Protection (Pest and Stock Route Management) Act (2002)*

Preamble

Plant and animal pests cause significant adverse economic, environmental and social impacts in Queensland. They place a large burden on communities in the form of management costs, and by reducing industry productivity, threatening environmentally significant areas or species, contributing to land degradation and impact on health, recreation and social amenity.

The *Land Protection (Pest and Stock Route Management) Act 2002* places a responsibility on government agencies, including the Queensland Parks and Wildlife Service (QPWS), to develop, adopt and implement agency strategies and plans to manage pests on land and water bodies for which they have direct management responsibility. These agencies also have a responsibility to contribute to local government pest management planning.

In addition, QPWS has a role to conserve and manage the natural environment for the benefit of all Queenslanders. It aims to deliver long-term sustainability for the state's natural environment by promoting sustainable living and resource use, and by strengthening the state's response to climate change. Effective management of pests is recognised as an important component of the role of QPWS in managing the state's natural and cultural resources.

QPWS has direct management responsibility for on-ground pest management, on approximately 12 million hectares including the protected area estate (national parks & conservation reserves), State forests and timber reserves;

Purpose and Scope

This plan has been written to meet QPWS obligations under the *Land Protection (Pest and Stock Route Management) Act 2002*. It provides principles, strategies and objectives for pest management on State lands managed by QPWS. The plan is also consistent with State government policy and QPWS obligations under the *Nature Conservation Act 1992*, *Land Act 1994*, *Forestry Act 1959*, and *Local Government Act 1993*. These obligations include:

- management principles prescribed for each class of protected area in the *Nature Conservation Act 1992*;
- duty of care for the land provisions of *the Land Act 1994*; and
- the cardinal principle of management of State forests under the *Forestry Act 1959*.

Attachments 1 and 2 provide the State land and QPWS pest management planning frameworks and where this plan fits within each.

This plan applies to the management of pests declared under the *Land Protection (Pest and Stock Route Management) Act 2002*, pests declared under local government laws and undeclared pests capable of causing environmental harm and damage to QPWS managed lands. This plan will also apply to all future additions to QPWS managed lands.

Key stakeholders

A broad range of external stakeholders has an interest in QPWS pest management. Key stakeholders include:

- All direct users of QPWS managed areas and their industry and interest groups. These groups include (in no particular order or priority) pastoralists, timber and other resource users (for tenures under both the *Nature Conservation Act 1992* and *Forestry Act 1959*), mining and extractive industries, fishing and recreation groups.
- Neighbouring landholders and their industry/interest groups.
- The conservation movement.
- State agencies and entities, in particular:
 - Local governments and the Local Government Association of Queensland.

In accordance with its Good Neighbour Policy, QPWS will co-operate with neighbouring landholders, government departments and local authorities to meet its legislative requirements for pest plant and animal control.

Principles

In managing pests on the areas under its control, QPWS will:

- fulfil its pest management obligations under provisions and principles (see Attachment 3) of all relevant legislation and State and Departmental policies;
- contribute to cooperative and integrated approaches to pest management, including consultation and partnership arrangements;
- take account of all levels of State, regional and local government pest management planning;
- assess the risk posed by an identified pest including consideration of the location and extent of the pest occurrence and feasibility of management;
- use contemporary pest management techniques to reduce environmental, economic and social impacts;
- promote awareness and knowledge of pest management by staff and stakeholders;
- ensure that pest management is properly planned and executed to produce tangible and long-term outcomes;
- practice preventative measures to minimise the spread of pests;
- improve the effectiveness of its pest management through incorporating innovations and new technologies.

Strategies

The following strategies provide a framework for implementing QPWS pest management principles. They will be implemented to the maximum extent possible subject to available resources.

1.0 Planning

Objective: Strategic and operational planning is undertaken to achieve outcomes consistent with this plan's principles and strategies within time and resource constraints.

	Activities	Responsibility
1.1	Participate cooperatively in pest management planning across the landscape with surrounding land managers, other government departments, local governments and utility providers to meet individual business unit's requirements.	Central Office / Regions
1.2	Use the QPWS Pest Management System to develop pest management strategies for QPWS managed areas.	Central Office / Regions
1.3	Actively promote pest management responsibilities in the QPWS business planning process.	Central Office / Regions
1.4	Contribute to the development and review of Local Government Area pest management plans, including support in identification of environmentally sensitive areas.	Regions
1.5	Integrate planning for pest management with all other planning processes conducted for, or relevant to, a particular area.	Central Office / Regions
1.6	Incorporate appropriate pest management requirements into relevant permits, licences, agreements and contracts issued and administered by QPWS.	Central Office / Regions

2.0 Communication

Objective: To ensure that staff and stakeholders are effectively engaged in undertaking pest management activities.

	Activities	Responsibility
2.1	Maintain active representation on relevant regional, Statewide and national pest management forums (e.g. Land Protection Council, Weeds of National Significance Working Groups etc) and other working groups where relevant.	Central Office / Regions
2.2	Ensure that stakeholders are kept informed of departmental strategies, policies and practices regarding QPWS pest management and proactively manage incorrect information or perceptions.	Central Office / Regions
2.3	Communicate and promote pest management obligations and issues with lessees and contractors and other users of QPWS managed lands.	Central Office / Regions
2.4	Engage relevant stakeholders when undertaking pest	Central Office / Regions

management activities.

3.0 Awareness and Training

Objective: *To undertake a pro-active approach to raise awareness regarding pest management on State lands and ensure that staff are adequately trained.*

	Activities	Responsibility
3.1	Establish and maintain clear points of contact for access to and dissemination of information to all stakeholders including staff.	Central Office
3.2	Promote relevant policy approaches to pest management such as the QPWS Good Neighbour policy.	Central Office / Regions
3.3	Provide high quality specific training for all staff involved in pest management.	Central Office / Regions

4.0 Information and Assessment

Objective: *To provide reliable and up to date information to support decision making.*

	Activities	Responsibility
4.1	Maintain and improve information, data and support systems for recording, reporting and sharing of pest information, including ParkInfo.	Central Office / Regions
4.2	Ensure that staff have access to relevant and up-to-date pest management information.	Central Office

5.0 Prevention

Objective: *To implement cost effective actions appropriate for local circumstances that minimise the spread of pests.*

	Activities	Responsibility
5.1	Develop and implement pest prevention policies and protocols which are consistent with national and State strategies and policies.	Central Office / Regions
5.2	Develop and implement work practices that limit contamination of vehicles and machinery.	Central Office / Regions
5.3	Develop and implement procedures to ensure that contractors, lessees or permittees conducting activities on QPWS managed areas do not contribute to the introduction of new pest species or increase existing infestations.	Central Office / Regions

6.0 On-ground Implementation

Objective: *To work within an integrated pest management system to manage the impact of pests where required.*

	Activities	Responsibility
6.1	Where practical and appropriate participate cooperatively in pest management across the landscape with surrounding land managers, other government departments, local governments and utility providers to ensure landscape-level pest management occurs.	Central Office / Regions
6.2	Use the QPWS Pest Management System to guide on-ground pest management activities on QPWS managed areas.	Regions
6.3	Monitor pest management responsibilities in relation to agreements with any other parties, in particular lessees and permittees, for the use of QPWS managed areas.	Regions

7.0 Monitoring and Evaluation

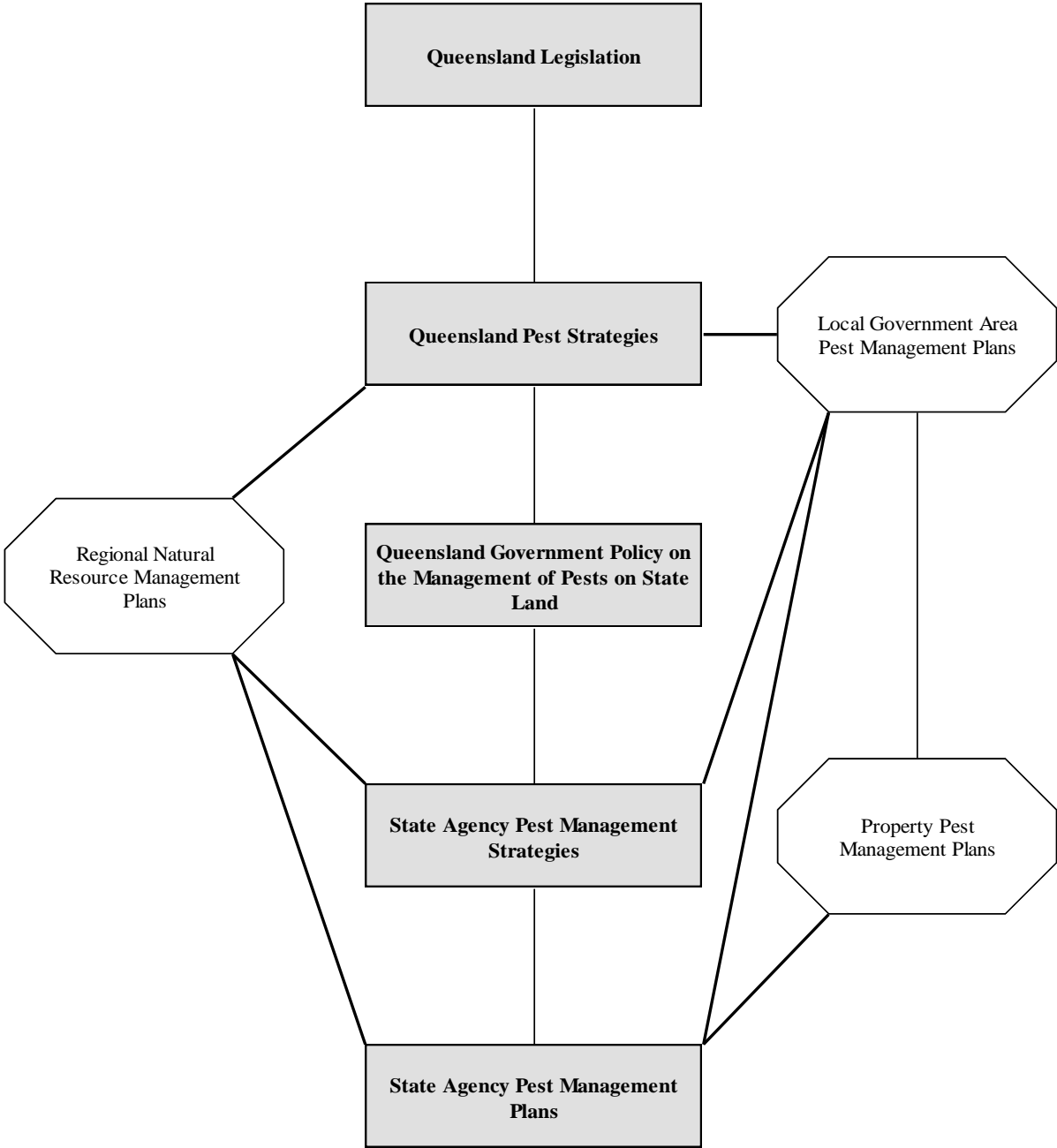
Objective: *To evaluate the effectiveness of pest management activities and to continually improve.*

	Activities	Responsibility
7.1	Regularly review priorities for pest management on QPWS managed areas, under the processes in the QPWS Pest	Central Office / Regions

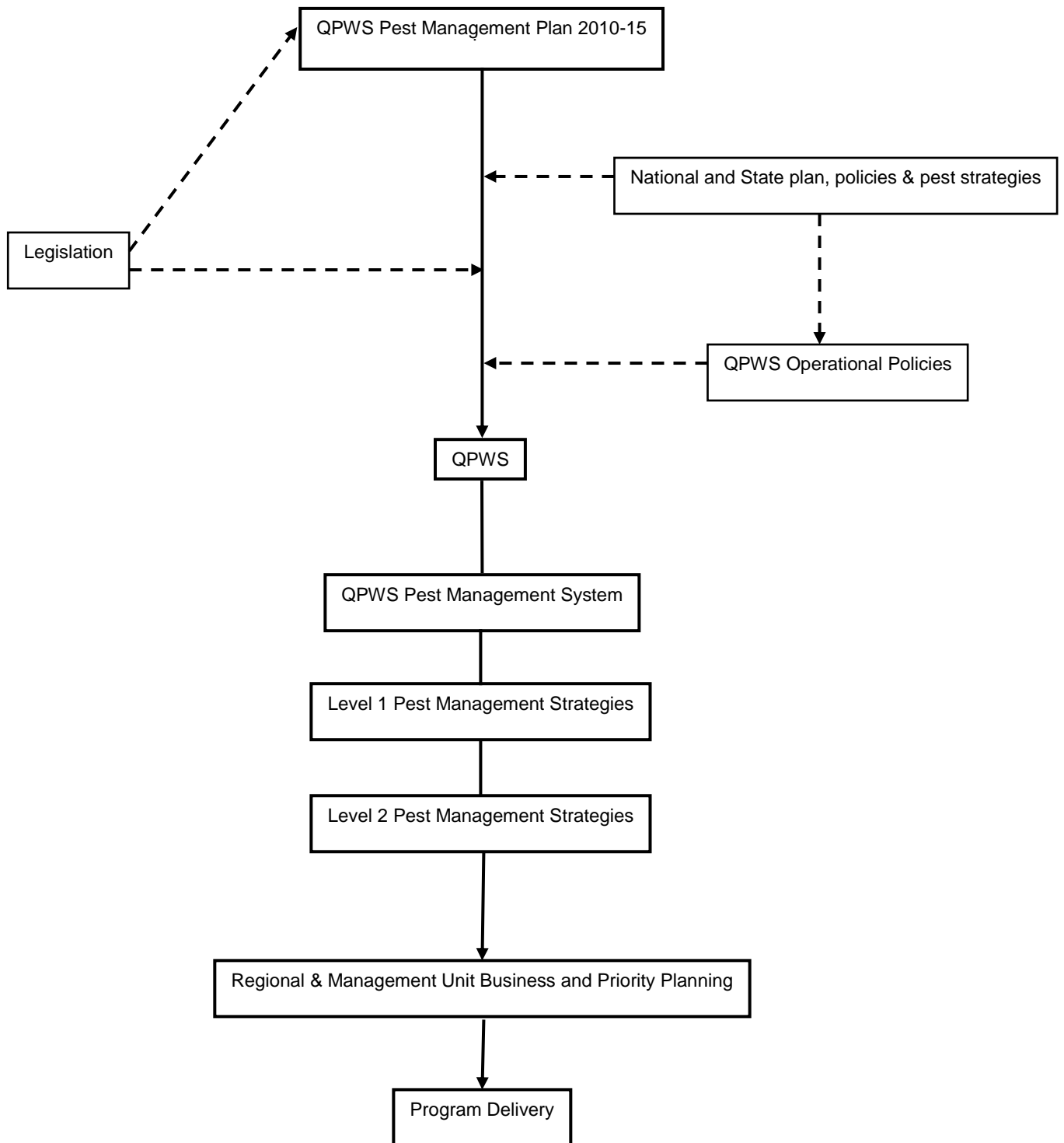
Management System.

- 7.2 Review and evaluate this plan every five years. Central Office
- 7.3 Participate in, or facilitate research by others, into the impacts, ecology and management of pests on QPWS managed areas Central Office/Regions

ATTACHMENT 1: The whole-of-government land pest management planning framework



ATTACHMENT 2: QPWS Pest Management Framework



ATTACHMENT 3: Principles of pest management as set out in the *Land Protection (Pest and Stock Route Management) Act 2002*

Integration

Pest management is an integral part of managing natural resources and agricultural systems.

Public awareness

Public awareness and knowledge of pests must be raised to increase the capacity and willingness of individuals to manage pests.

Commitment

Effective pest management requires a long-term commitment to pest management by the community, industry groups and government entities.

Consultation and partnership

Consultation and partnership arrangements between local communities, industry groups, State government agencies and local governments must be established to achieve a collaborative approach to pest management.

Planning

Pest management planning must be consistent at local, regional, State and national levels to ensure resources target priorities for pest management identified at each level.

Prevention

Preventative pest control is achieved by:

- a) preventing the spread of pests, and viable parts of pests, especially by human activity; and
- b) early detection and intervention to control pests.

Best practice

Pest management must be based on ecologically and socially responsible pest management practices that protect the environment and the productive capacity of natural resources.

Improvement

Research about pests, and regular monitoring and evaluation of pest control activities, is necessary to improve pest management practices.